

# Advanced Data Protection Solution for Storage Networks

## FAST FACTS ABOUT NETVAULT 7

- Advanced SAN/NAS Support
- Clustered Application Support
- Command Line Interface (CLI)
- Comprehensive Media Management
- Direct Access Restore
- Disaster Recovery
- Disk-to-Disk Backup
- Dynamic Device Sharing
- Event Notification
- Extensive Platform Support
- GbE Device Support
- High Performance Data Movers
- Media Data Copy
- Network Compression
- Load Balancing
- Comprehensive NDMP Support
- Open File Protection



From the experts in open systems data recovery, BakBone Software's NetVault 7 delivers enhanced data protection and enterprise-class functionality that scales to meet the demands of any sized environment. NetVault's flexible, modular architecture delivers proven reliability and high performance, with a unique combination of features designed to meet current and future data protection needs. Whether you are managing a few servers or a multi-site networked storage environment, there is a NetVault package designed to fit your needs.

## Key Benefits

### Increased Automation

NetVault 7's event notification enhancements and policy based job management features are designed to provide increased automation, especially when deployed across heterogeneous storage networks. NetVault 7 enables administrators to define, manage and monitor jobs from remote clients, while the flexible notification feature ensures business continuance with the ability to define event contexts and triggers, tailoring NetVault to meet your unique requirements.

### Enhanced Administrator Productivity

Policy based job management and NetVault's enhanced reporting capabilities simplify maintenance of your data protection strategies. Many activities such as job definition and event notification can be defined and modified at a group level, making administrative tasks quicker and easier.

### Rapid Deployment

NetVault's automated installation and device configuration features make it easy to add, manage or re-deploy distributed data management components throughout an ever-growing enterprise storage environment. With our Modular Architecture you can license only those components you need today, while easily expanding the system as your storage environment or performance requirements grow.

### Lower Total Cost of Ownership

By dramatically simplifying implementation and networked storage administration, NetVault 7 ensures improved data availability while reducing associated labor costs. NetVault can significantly lower your TCO and provide a return on your initial software investment in as little as six to nine months.

## Major Features

### Policy Based Job Management

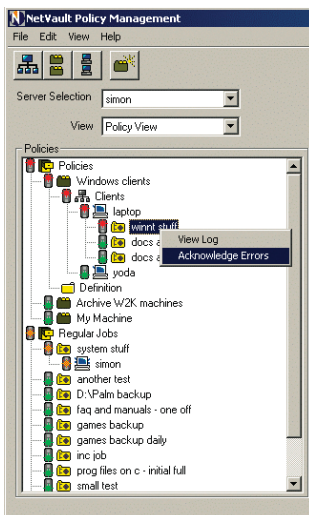
Comprehensive job management tools help storage administrators create data protection policies that are used to efficiently define and manage backup strategies for all of your clients and critical applications. The Policy Management tools allow job templates to be created and easily applied to a single client or an entire group of clients, simultaneously. Once defined, policy-based administration allows you to monitor, manage and edit a group of jobs as a single entity. This ultimately improves productivity and reduces the human error associated with manual job management.

### User Level Access

To ease storage administration, the User Level Access feature allows users to be defined with a specific set of privileges on an individual or group basis. For example, you may grant the ability to run reports and define backup jobs to your Database Administrators, while limiting all other users to restoring only their clients' files. User Level Access is ideal for extending a subset of NetVault's features to other members of the IT staff as well as end users and helps free network administrators for more critical tasks.

### Enhanced Reporting

The improved reporting feature enables the administrator to schedule reports on many aspects of NetVault's operation with several output types available, such as HTML or Comma Delimited. Reports can be viewed dynamically, printed and/or emailed upon completion. In addition, a powerful report-editing tool has been provided to allow user-defined reports to be created. Reports can be executed conditionally and/or on a scheduled basis.



NetVault Policy View showing color coded active policy status.

## SUPPORTED DEVICES & LIBRARIES

Most existing tape libraries and tape formats (DLT, 8mm, 4mm DAT, DTF and others), including the latest high speed technologies (LTO2, S-AIT, AIT-3, SuperDLT, DTF2, M2) from: ADIC, Breece Hill, Dell, Exabyte, HP, IBM, NEC, Overland Storage, Plasmon, Qualstar, Quantum, Seagate, SONY, Spectra Logic, StorageTek plus ACSLS, and Tandberg

## SUPPORTED SAN/NAS DEVICES

Ancor, Brocade, Chaparral, Crossroads, EMC, FalconStor, Network Appliance, Procom, Qlogic and Vixel

## SUPPORTED SAN/NAS DEVICES

Ancor, Brocade, Chaparral, Crossroads, EMC, FalconStor, Network Appliance, Procom, Qlogic and Vixel

## SERVER AND CLIENT PLATFORMS

Alpha Tru64, FreeBSD, HP-UX, IBM AIX, Most Linux Platforms, Mac OS X, NCR MP-RAS, SCO Openserver, SCO Unixware, SGI Irix, Solaris (SPARC), Solaris (Intel), Windows 2000/NT, Windows Server 2003

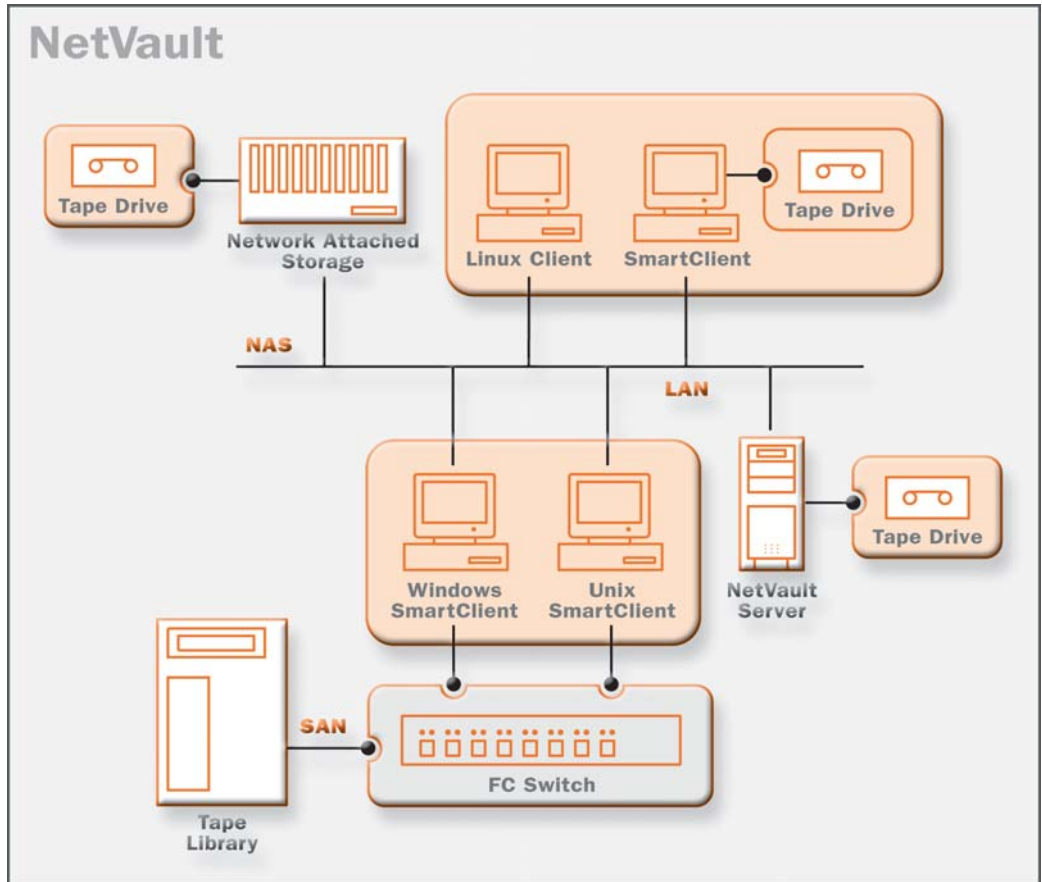
## CLIENT PLATFORMS

Novell NetWare, Windows 95/98/ME/XP

*Specifications and System Requirements subject to change without notice. For updated information, please visit, [www.bakbone.com/products](http://www.bakbone.com/products)*

©2004 BakBone Software, the BakBone logo, APM, and NetVault are trademarks or registered trademarks of BakBone Software, Inc., in the United States and/or in other countries. All other names and trademarks are the property of their respective owners.  
NEV2032-1A 10/04

[www.bakbone.com](http://www.bakbone.com)



## SAN/NAS Support

NetVault helps you leverage your investment in today's advanced storage networking technology. Large capacity libraries and high speed tape devices are easily shared within a NetVault domain. With DirecSAN™ support you can share media and libraries between multiple nodes to distribute backup operations while increasing data throughput and reducing network load. NetVault automatically determines the best data path and handles shared device arbitration.

## Cluster Configuration Support

For today's business critical IT environments, NetVault offers enhanced support for file systems and applications running in Windows and Linux clustered environments. Single-screen configuration of NetVault cluster support allows the system administrator to identically install and configure the Application Plugin Module (APM™) for each node in the cluster, eliminating the complexity that may otherwise result in configuration errors. Specific information on cluster support is available at [www.bakbone.com/products/netvault7.3/](http://www.bakbone.com/products/netvault7.3/)

## Comprehensive Application Support

NetVault provides a full suite of APMs to provide online support for your critical business database and

messaging applications. Installed on the client, the APM communicates with these applications using a backup interface that is consistent with each application. Each APM's interface automatically adds application specific components to your backup and restore selection criteria.

## About BakBone

BakBone Software (TSX: BKB; OTCBB: BKBOF) is a leading global data protection provider that develops and distributes data backup, restore, and disaster recovery software for network storage and open-systems environments worldwide. BakBone delivers scalable solutions that address the complex demands of large enterprise environments, as well as small- and medium- sized businesses. Founded in 2000, BakBone products are used by Fortune 1000 corporations and domestic and international government entities. Distributed through a select global network of OEM partners, resellers and solution providers, interested companies can find more information about BakBone's products and services at [www.bakbone.com](http://www.bakbone.com) or email [info@bakbone.com](mailto:info@bakbone.com).

 **BakBone**  
Redefining Data Protection.

### Corporate Headquarters

BakBone Software Inc.  
10145 Pacific Heights Blvd.  
Suite 500  
San Diego, CA 92121 USA  
P: 1-858-450-9009  
P: 1-866-484-2663  
F: 1-858-450-9929  
[info@bakbone.com](mailto:info@bakbone.com)

### Pacific Rim Headquarters

BakBone Software K.K.  
Shinjuku Dai-ichi Seimei Bldg. 11F  
2-7-1 Nishi Shinjuku Shinjuku-ku  
Tokyo 163-0711 Japan  
P: +81-3-5908-3511  
F: +81-3-5908-3512  
[info@bakbone.co.jp](mailto:info@bakbone.co.jp)

### European Headquarters

BakBone Software Ltd.  
Merck House  
Seldown Lane  
Poole, Dorset BH15 1TW England  
P: +44-1202-241000  
F: +44-1202-249000  
[info@bakbone.co.uk](mailto:info@bakbone.co.uk)